



BY APPOINTMENT TO HM QUEEN ELIZABETH II
SUPPLIERS OF WALLPAPERS PAINTS & FABRICS
ARTHUR SANDERSON AND SONS ENGLAND

Sanderson

WATER GARDEN





Sanderson

WATER GARDEN

A CELEBRATION OF NEWLY DISCOVERED ARCHIVE DOCUMENTS
AND AN EXCITING RANGE OF CONTEMPORARY INTERPRETATIONS,
SANDERSON LAUNCHES WATER GARDEN FOR SS22.

The end of the 19th and early 20th century was a romantic period for English decoration, influenced heavily by the enduring resonance of Oriental styles. Japonism and a love of Indian and Chinese patterns reminiscent of those found in our nation's ancestral homes remained popular, appreciated further by new and younger audiences.

Oriental water gardens were hugely fashionable and landscaped into the grounds of many English country estates. Exuding tranquillity and calm, they represented the tastes of the time, brimming with new and exotic plants. Inspired by an extraordinary collection of documents in the Sanderson archive, Water Garden captures the enduring beauty of this decadent era.

In the launch, Sanderson proudly shares some of its most stylish documents. From the striking blooms of Emperor Peony to Fusang Tree's decorative history and the imperial symbolism of Chinese Dragon, Water Garden charts the appeal of Eastern inspired design and the joy of its application into the world of English interiors.

Prominent to the story is the London wallpaper printer, Jeffrey & Co. (1836 to 1924). Best known for its association with several important Arts and Crafts figures, Jeffrey & Co.'s wallpapers of the time featured bold trailing patterns of highly stylised, oversized flowerheads, which burden the elegant turns of their coiling stems.

Rebecca Craig, head of design for Sanderson says, "This collection is all about discovering documents in our archive that lain previously untouched. Whether drawn, printed or painted, we're celebrating their authentic beauty and the host of eastern cultures that came together to create something so special.

Along with a touch of glamour, subtle metallics and vibrant colours blend to give our country aesthetic an elegant, contemporary twist".



EMPEROR BLUE & PLUM





EMPEROR BLUE & PLUM

The warmth of joyous pinks and vibrant berry shades introduce a carefree confidence to this contemporary colour group. Embracing an alternative theme, wild plum notes and hints of mauve feature throughout, teaming perfectly to bring a new perspective to a previously traditional scheme.

EMPEROR BLUE & PLUM

Styling Tips



PAINT

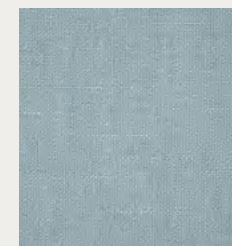
Cadet Blue

Rose Ash Lt

PAIR WITH



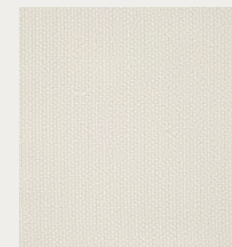
TUSCANY II | 237178



DEBEN | 237221



MELFORD STRIPE | 237208



WOODLAND PLAIN | 237239

An updated take on classic China blues, joyous plum accents create an elevated look that works well throughout the home.

CHINOISERIE HALL

Chinoiserie Hall is inspired by a beautifully coloured archive wallpaper called Chinese Magpie, believed to be designed by William Turner (1867-1936) and produced by Jeffrey & Co. In this iteration, intricate budgies perch on delicate branches amongst springtime blossom and neat buds.

WALLPAPER



CHINOISERIE HALL | 217113



CHINOISERIE HALL | 217112



CHINOISERIE HALL | 217110



CHINOISERIE HALL | 217111

FABRIC



CHINOISERIE HALL | 237273



CHINOISERIE HALL | 237274



CHINOISERIE HALL | 237275





FUSANG TREE

This stunning tree of life fabric is adorned with decorative patterned leaves and flowers. A large-scale design printed on 100% linen, it has been produced to look like the original block print housed in the Sanderson archive.

PRINTS



FUSANG TREE | 226965



FUSANG TREE | 226966



FUSANG TREE | 226964

PAGODA RIVER

Pagoda River is a very early design from the Eton Rural collections of the 1910s. A smart and versatile toile, it depicts Chinese pagodas and cheerful characters.

FABRIC



PAGODA RIVER | DVIPPA203



PAGODA RIVER | DVIPPA202





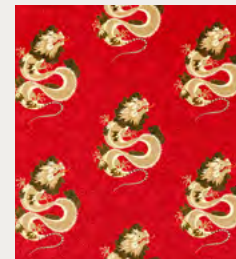
WATER DRAGON

A symbol of imperial power and authority, our hand painted water dragon was designed in the Sanderson studio. Its traditional background of clouds and rocks are reminiscent of Chinese porcelain, reinterpreted into a sumptuous, richly coloured cotton velvet.

FABRIC



WATER DRAGON | 226976



WATER DRAGON | 226977

CHINA BLUE

Stylised motifs of flowers and fruit are beautifully placed on this all-over cotton-linen blend fabric, adapted from a rare French textile sample dating from the 18th Century. Originally block printed, this upholstery fabric has been reproduced in a contemporary inky blue and neutral colourway.

FABRIC



CHINA BLUE | DPEMCH204



SCALLION GREEN & LOTUS PINK





SCALLION GREEN & LOTUS PINK

An international yet timeless blend of fresh greens and poppy pinks combine with gosling yellow to create an uplifting and modern palette. Optimistic and cheerful it works wonderfully against a clean white ground to create a light, colourful scheme.

SCALLION GREEN & LOTUS PINK

Styling Tips



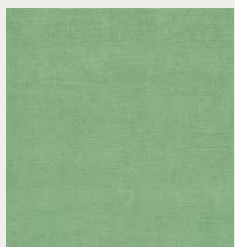
Robust, yet feminine, team classic stripes with natural furniture for a punchy, impactful interior. Pencil pleats, scalloped edging and natural walls make colours pop.



PAIR WITH



TUSCANY II | 237175



TUSCANY II | 237149



MELFORD STRIPE | 237207

PAINT

Botanical Green

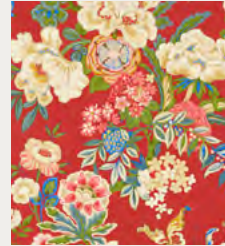
Rhodera



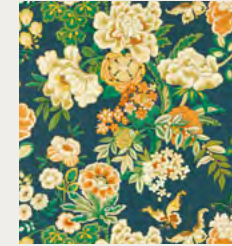
EMPEROR PEONY

In contrast to its blousy Victorian contemporaries, the Chinese inspired decorative style of this 1920's Jeffrey & Co. archive design is adorned with large peonies and tropical butterflies. A wide width wallpaper, its opaque detail pays homage to the block printed original, elevated even further by the addition of subtle metallic highlights.

WALLPAPER



EMPEROR PEONY | 217119



EMPEROR PEONY | 217120



EMPEROR PEONY | 217121

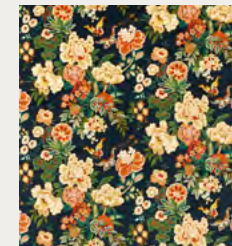


EMPEROR PEONY | 217122

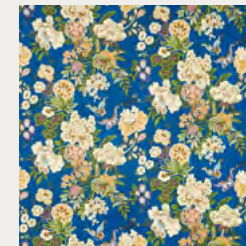
FABRIC



EMPEROR PEONY | 226962



EMPEROR PEONY | 226961



EMPEROR PEONY | 226960



EMPEROR PEONY | 226963

INDIENNE PEACOCK

Inspired by authentic Indienne textiles, originally produced in the east and manufactured in Europe, this interpretation was designed in the Sanderson studio. Produced using transitional colourways, stylised peacocks and tropical birds perch upon well spaced branches in a range of delicate watercolour tones. The Blueberry colourway is printed on satin and both the Gosling Yellow and Cinnabar Red colourways are on 100% linen and suitable for drapes only.

FABRIC



INDIENNE PEACOCK | 226973



INDIENNE PEACOCK | 226972



INDIENNE PEACOCK | 226971





BAMBOO & BIRDS

Inspired by a wallpaper from the archive, Japanese influences feature in this surface printed design that retains a hand block printed look. An all-over pattern of striped bamboo, hibiscus, hydrangea and wisteria provide a twisting backdrop to perched exotic birds.

WALLPAPER



BAMBOO & BIRDS | 217130



BAMBOO & BIRDS | 217129



BAMBOO & BIRDS | 217128

FABRIC



BAMBOO & BIRDS | 226969



BAMBOO & BIRDS | 226970

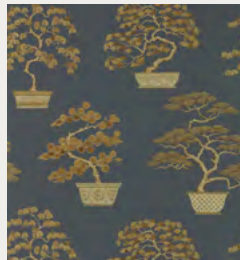
PENJING

Named after the ancient Chinese art of forming miniature trees and landscapes, Penjing is an intricate embroidery on a herringbone linen ground. Planted in decorative pots, the design, which includes a variety of stitch techniques, alludes to a time when porcelain was more precious than gold.

WALLPAPER



PENJING | 217108



PENJING | 217109

FABRIC



PENJING | 237268



JADE & APRICOT





JADE & APRICOT

With serenity and peace at its heart, this soft, soothing palette blends traditional Chinese colourways with tranquil, mindful tones. A symbol of decency and honour, jade pairs with apricot shades, known for their affinity with kindness and wellbeing.

JADE & APRICOT *Styling Tips*



PAINT

Silver Mint

Inkwood

PAIR WITH



RUE LINEN | 237047



RUE LINEN | 237039



MELFORD | 237092



MELFORRD STRIPE | 237207

Made relevant for now, this colour palette works well with rattan rugs, bamboo furniture and natural textures.



CRANE & FROG

Inspired by a beautiful, painted silk, this wallpaper was designed in the Sanderson studio. Telling a story of English water gardens, Emperor ducks, characterful frogs and regal koi carp pair with irises and roses to recreate the spirit of the 1930s.

WALLPAPER



CRANE & FROG | 217125



CRANE & FROG | 217124



CRANE & FROG | 217123

FABRIC



CRANE & FROG | 226968

CHINESE LANTERN

The gently hanging embroidered pendants of these delicate blooms are sensitively stitched to showcase the intricacies of each flowerhead. Discovered in the Dominican Republic during the late 17th century, fuchsias are renowned for their striking colourways, which have been carefully translated into this design.

FABRIC



CHINESE LANTERN | 237271



CHINESE LANTERN | 237270



CHINESE LANTERN | 237269





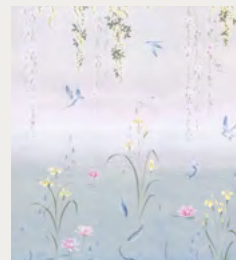
WATER GARDEN PANEL BY RACHEL SPELLING

Chosen as the 2017 QEST (Queen Elizabeth Scholarship Trust) Sanderson Design Co. Scholar, decorative painter, Rachel Spelling, has crafted an elegant, contemporary wallpaper panel for Sanderson Water Garden. Inspired by nature's peaceful pleasures, in contrast to the chaos of London in lockdown, her design draws on the joys of springtime buds, early butterflies, and a quiet sense of space.

Using a refined and harmonious palette of gently layered pinks, blues and yellows, Rachel's muted scheme reveals a tranquil horizon that reaches from water to sky. A painted casein distemper ground, breathable and chalky, forms an ethereal backdrop to trailing golden laburnum clusters, which caught Rachel's eye in the Sanderson archive. Teeming with the promise of new life, and painted in a way that fuses Chinese techniques with Japanese influences and western style, Water Garden shares an all-encompassing narrative of freedom and self-expression.

QEST supports the vital skills in traditional and contemporary crafts and contributes to excellence in the British craft industry.

WALLPAPER



WATER GARDEN | 217131

LOTUS LEAF

An unusual interpretation of long-stemmed lotus leaves reaching skyward, hand drawn by the Sanderson studio. Representing the delicate foliage found amongst traditional water garden ponds, gravure inks add to the design's tonality and fluid hand. The copper colourway is indicative of the art deco period, subtly shimmering against a dark ground.

WALLPAPER



LOTUS LEAF | 217126



LOTUS LEAF | 217127

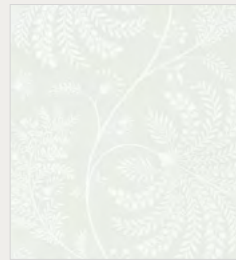




MAPPERTON

This stylised wallpaper features delicate fine filigree outlines of the intricate patterns within leaves and flowers.

WALLPAPER



MAPPERTON | 216343



MAPPERTON | 216341

CINNABAR RED, OLIVE & INK BLACK





CINNABAR RED, OLIVE & INK BLACK

With olive taking its position as a new neutral, this energetic group pairs well with deeper colours. Bringing the outdoors in, it's a sophisticated duo of mossy tones and blush pinks accented with brass and gold for a touch of 1920's glamour. The addition of burgundy accents add an alternative jewel like dimension.

CINNABAR RED, OLIVE & INK BLACK

Styling Tips

The dramatic warmth of this colourway was inspired by the coromandel lacquer used in Chinese folding screens and inlays. Sharing an art deco vibe, its statement scheme pops against plain walls and elegant furniture.



PAIR WITH



TUSCANY II | 237179



TUSCANY II | 237140



MELFORD STRIPE | 237207

PAINT

Bengal Red

Burn Black Lt



AMARA BUTTERFLY

Inspired by a Chinese embroidery made towards the end of the 19th century, this popular 1930's design would've been imported from east to west when its cheerful style was first in vogue. Surface printing captures a decorative, hand printed look on a lovely chalky ground.

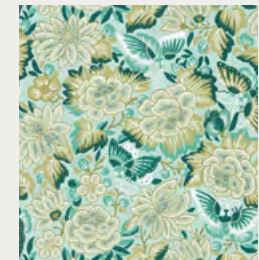
WALLPAPER



AMARA BUTTERFLY | 217116



AMARA BUTTERFLY | 217117

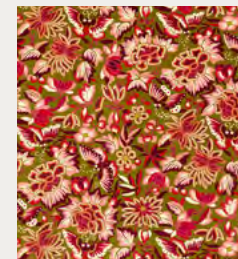


AMARA BUTTERFLY | 217118

FABRIC



AMARA BUTTERFLY | 226974



AMARA BUTTERFLY | 226975

BONSAI & GINGKO

This wonderfully soft cotton velvet with jacquard weft detail was designed in the Sanderson studio. It's durable and an excellent choice for upholstery, with a forest of ginkgo and bonsai trees creating a stunning treetop canopy.

FABRIC



BONSAI & GINGKO | 237276



BONSAI & GINGKO | 237277



BONSAI & GINGKO | 237278





VOYAGING KOI

With its mica scales glimmering softly against a translucent painterly ground, the formal, art deco layout of this wallpaper represents a carp's journey through life. A subtle texture indicative of rippling water surrounds elegant, outstretched fins.

WALLPAPER



VOYAGING KOI | 217114



VOYAGING KOI | 217115

LABURNUM FALLS

Also known as the golden chain tree, the hanging blooms of our beautiful draping embroidery contrast against an intense, dark ground. With stitches that look like silk, seed pods, edged in yellow and pink bring a natural elegance to this archive inspired design.

FABRIC



LABURNUM FALLS | 237272





KEROS

This statement wallpaper design features a stylised pine tree reminiscent of the landscape of native China. Inspired by a Sanderson archive design from the 1920s, it has been redrawn for today's interiors.

WALLPAPER



KEROS | 213046

WALLPAPER INDEX



AMARA BUTTERFLY | 217116



AMARA BUTTERFLY | 217117



AMARA BUTTERFLY | 217118



BAMBOO & BIRDS | 217128



BAMBOO & BIRDS | 217129



BAMBOO & BIRDS | 217130



CHINOISERIE HALL | 217110



CHINOISERIE HALL | 217111



CHINOISERIE HALL | 217112



CHINOISERIE HALL | 217113



EMPEROR PEONY | 217119



EMPEROR PEONY | 217120



EMPEROR PEONY | 217121



EMPEROR PEONY | 217122



CRANE & FROG | 217123



CRANE & FROG | 217124



CRANE & FROG | 217125



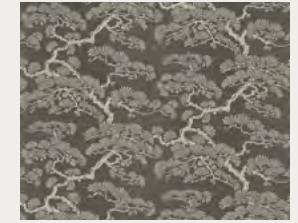
EMPIRE TRELLIS | 216335



EMPIRE TRELLIS | 216337



EMPIRE TRELLIS | 216338



KEROS | 213046



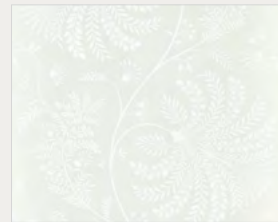
LOTUS LEAF | 217126



LOTUS LEAF | 217127



MAPPERTON | 216341



MAPPERTON | 216343



PENJING | 217108



PENJING | 217109



VOYAGING KOI | 217114



VOYAGING KOI | 217115



WATER GARDEN | 217131

FABRIC INDEX



AMARA BUTTERFLY | 226974



AMARA BUTTERFLY | 226975



ANTHOS | 235332



ANTHOS | 235333



BAMBOO & BIRDS | 226969



BAMBOO & BIRDS | 226970



BONSAI & GINGKO | 237276



BONSAI & GINGKO | 237277



BONSAI & GINGKO | 237278



CHINA BLUE | DPEMCH204



CHINESE LANTERN | 237269



CHINESE LANTERN | 237270



CHINESE LANTERN | 237271



CHINOISERIE HALL | 237273



CHINOISERIE HALL | 237274



CHINOISERIE HALL | 237275



CRANE & FROG | 226968



EMPEROR PEONY | 226960



EMPEROR PEONY | 226961



EMPEROR PEONY | 226962



EMPEROR PEONY | 226963



FUSANG TREE | 226964



FUSANG TREE | 226965



FUSANG TREE | 226966



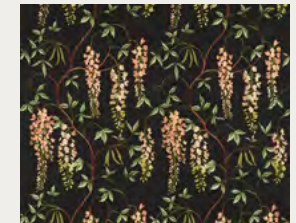
INDIENNE PEACOCK | 226971



INDIENNE PEACOCK | 226972



INDIENNE PEACOCK | 226973



LABURNUM FALLS | 237272



PAGODA RIVER | DVIPPA202



PAGODA RIVER | DVIPPA203



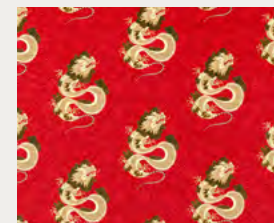
PENJING | 237268



STARLA | 235251



WATER DRAGON | 226976



WATER DRAGON | 226977



CONTACT INFORMATION

HEAD OFFICE

Chalfont House, Oxford Road
Denham
UB9 4DX
Tel: +44 (0) 20 3457 5862

PRESS OFFICE

Email: press@sandersondesigngroup.com
Tel: +44 (0) 1895 22100

FOR FURTHER INFORMATION:

sanderson.sandersondesigngroup.com

To find your nearest stockist:
sandersondesigngroup.com

LONDON SHOWROOM

First Floor, South Dome, Design Centre
Chelsea Harbour, London SW10 0XE
Tel: +44 (0)203 903 3700
Email: showroom@sandersondesigngroup.com

NEW YORK

D&D Building
979 Third Avenue, Suite 409
New York 10022
Tel 1: +1 800 395 8760
Email: sales-ny@zoffany.com

CHICAGO SHOWROOM

222 Merchandise Mart Plaza
Suite 6-117
Chicago, 60654
Tel: +1 312 929 2058
Email: sales-chicago@sandersondesigngroup.com

DUBAI SHOWROOM

The Prism Tower
Office 2708, Floor 27, PO Box 391982
Business Bay, Dubai, United Arab Emirates
Tel: +971 (0) 4361 9766
Email: infome@sandersondesigngroup.com

GERMANY SHOWROOM/OFFICE

Sanderson Design Goup Kronenstrabe 4
76133 Karlsruhe, Germany
Tel: +49 (0) 721-981 985-60
Email: verkauf@sandersondesigngroup.com

RUSSIA SHOWROOM

Anataliya Zhivova 10 123100 Moscow
Email: sandersonrussia@gmail.com

NETHERLANDS SHOWROOM

ETC Licht & Interieur
Randweg 20, 4104 AC Culemborg
Netherlands
Tel: +31 (0) 65349 3696
Email: international@sandersondesigngroup.com

